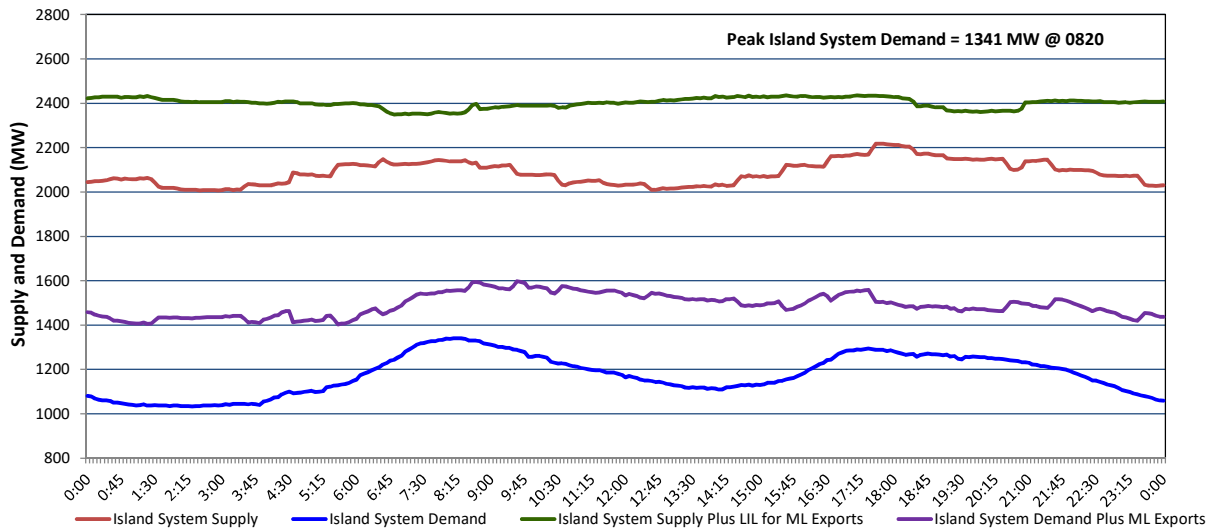


Newfoundland Labrador Hydro (NLH) Supply and Demand Status Report Filed Tuesday, December 17, 2024

Section 1 Island Interconnected System - Supply, Demand & Exports Actual 24 Hour System Performance For Monday, December 16, 2024



Island Supply Notes For December 16, 2024 ¹

A As of 0000 hours, October 20, 2024, Holyrood Unit 1 unavailable due to forced extension to planned outage (170 MW).

Section 2 Island Interconnected System - Supply, Demand & Outlook

Tue, Dec 17, 2024	Island System Outlook ²	Seven-Day Forecast	Island System Daily Peak Demand (MW)	
			Forecast ⁸	Adjusted ⁶
Island System Supply: ⁴	1,857 MW	Tuesday, December 17, 2024	1,320	1,240
NLH Island Generation: ^{3,7}	1,525 MW	Wednesday, December 18, 2024	1,210	1,130
NLH Island Power Purchases: ⁵	90 MW	Thursday, December 19, 2024	1,225	1,145
NP and CBPP Owned Generation:	220 MW	Friday, December 20, 2024	1,265	1,185
LIL/ML Net Imports to Island: ⁹	22 MW	Saturday, December 21, 2024	1,285	1,205
		Sunday, December 22, 2024	1,370	1,290
7-Day Island Peak Demand Forecast:	1,530 MW	Monday, December 23, 2024	1,530	1,450

Island Supply Notes For December 17, 2024

B At 0552 hours, December 17, 2024, Labrador Island Link available at 360 MW due to planned derating (700 MW) - Monopole.

Notes:

1. Generation outages for running and corrective maintenance are included. These are not unusual for power system operations. They generally do not impact customer supply. Hydro schedules outages to system equipment whenever possible to coincide with periods when customer demands are low and sufficient supply reserves are available. However, from time to time equipment outages are necessary and reserves may be impacted.
2. As of 0800 Hours.
3. Gross continuous unit output.
4. Gross output from all Island sources (including Note 4).
5. NLH Island Power Purchases include: ML Imports, Exploits Generation, Rattle Brook, Star Lake, Wind Generation and capacity assistance (when applicable).
6. Adjusted for interruptible load and the impact of voltage reduction when applicable.
7. Due to limitations inherent in the design of combustion turbines, the output of combustion turbines may be reduced in the event that ambient temperatures exceed the threshold required for full rated output. This threshold is dependent on the design of each turbine.
8. Does not include ML Exports.
9. LIL Import sunk in the Island System. Actual LIL flows will be restricted by various system conditions including, but not limited to, Island Load, ML Exports and Avalon Unit status.

Section 3 Island Peak Demand and Exports Information Previous Day Actual Peak and Current Day Forecast Peak

Mon, Dec 16, 2024	Island Peak Demand ¹⁰	8:20	1,341 MW
	Exports at Peak		216 MW
	LIL Net Imports to Island		6,460 MWh
Tue, Dec 17, 2024	Forecast Island Peak Demand		1,320 MW

Notes: 10. Island Demand is supplied by NLH generation and purchases, LIL Imports plus generation owned and operated by Newfoundland Power and Corner Brook Pulp & Paper (Deer Lake Power, DLP).